

AQQWALKING TREAD MILL

INSTRUCTION MANUAL



aqquatix
EQUIPMENT FOR VERY AQQUATIX PEOPLE

THIS MANUAL WAS WRITTEN BY: AQUATIX USA. ALL RIGHTS RESERVED.



INDEX

1.	Introduction	page	2
2.	Important safety precautions	page	3
3.	Equipment presentation	page	4
4.	Structural and technical features	page	5
5.	User instructions	page	7
6.	Handling and storage	page	7
7.	Maintenance	page	8
8.	Replacement parts	page	10
9.	Technical assistance	page	12
10.	Warranty	page	12

INTRODUCTION

1 INTRODUCTION

- • • *Aqqatix USA would like to congratulate you on your choice: AQQWALKING TREAD MILL is the ultimate aquatic tread mill on the international market. It is the result of both careful research and extensive experience in the aquatic sports' equipment field. The growing popularity of aquatic exercise requires both reliable and functional equipment to enhance your aquatic training regimen and your choice of the AQQWALKING TREAD MILL will allow you to achieve your goals in an innovative and exciting manner.*

Enjoy your AQQWALKING TREAD MILL!

IMPORTANT SAFETY PRECAUTIONS

2 **IMPORTANT SAFETY PRECAUTIONS**

- • • **WARNING:** To reduce risk of serious injuries read all instructions and safety precautions in this manual carefully before using the equipment. Keep manual for future reference.

note 1 It is the responsibility of the owner of *Aqqwalking Tread Mill* to adequately inform any *Aqqwalking Tread Mill* user of the safety precautions listed here.

note 2 It is essential to be aware of all risks and dangers associated with the use of this equipment in order to prevent injury.

note 3 Operate *Aqqwalking Tread Mill* only in accordance with this instruction manual. Any other use should be considered improper and consequently dangerous.

note 4 Position the *Aqqwalking Tread Mill* on a flat surface. The tread mill has suction cups on the back legs for stability.

note 5 Keep feet and hands away from moving parts.

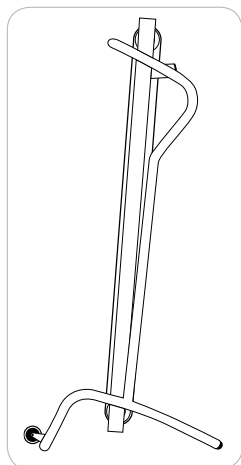
note 6 When using *Aqqwalking Tread Mill* always wear appropriate clothing, including soft rubber shoes/socks and swimming caps.

note 7 **Only use *Aqqwalking Tread Mill* when accompanied or supervised by another person.**

note 8 If you become dizzy or experience any type of pain while using the equipment, stop immediately, get out of the pool and consult a physician.

- • • **WARNING:** Before beginning this or any other training program, consult your physician. This is important particularly in the case of persons with pre-existing health conditions. Read all instructions before use. Aqqatix USA does not assume responsibility for personal injuries or damage sustained while using this product.

EQUIPMENT PRESENTATION



3 EQUIPMENT PRESENTATION

- • • *Aqqwalking Tread Mill* has an elegant look. It has a rigid frame and is very stable. The weight bearing frame is made of polished AISI 316L stainless steel which not only has excellent aesthetic value but it is designed to produce the best results in the environment that it is intended to be used in.
- • • The materials that have been used to build the equipment had been carefully chosen and tested to ensure reliability, longevity and to keep maintenance to a minimum.
- • • The *Aqqwalking Tread Mill* is simple to move using the rubber wheels attached to the frame and folds when not in use for easy storage.

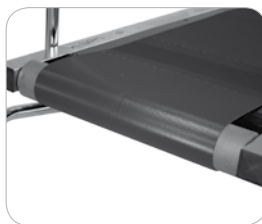
**STRUCTURAL AND
TECHNICAL FEATURES**

4.1 STRUCTURAL AND TECHNICAL FEATURES

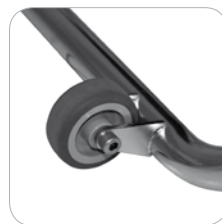
- • • *Aqqwalking Tread Mill* frame is manufactured from AISI 316L stainless steel and has a platform at a slope of 13°.
- • • The tread mill is stable when in use due to the rigid base.
- • • The platform size is approximately 40" x 20".
- • • The smooth rotation of the belt is a result of the combination of the belt itself, the platform and the rollers. These parts are designed so that they will not need any scheduled maintenance. The belt is made of a type of material which ensures a smooth rotation. We recommend the use of aqua socks or shoes.



Picture 1
Front handrail to hold onto for balance while the equipment is in use.



Picture 2
Rollers provide smooth belt rotation.



Picture 3
Rubber anti scratch wheels help to lower and remove the tread mill from the pool.

- • • **Picture 1** The front handrail is securely attached to the frame of the tread mill in order to provide stability while performing all different types of exercises.
- • • **Picture 2** The special belt rollers allow smooth belt rotation.
- • • **Picture 3** Simple to fold closed after use and to move to and from the pool edge with the help of the rubber wheels. These wheels also make the lowering into and removal from the pool far easier (*chapter 5*).

**STRUCTURAL AND
TECHNICAL FEATURES**

4.2 STRUCTURAL AND TECHNICAL FEATURES



1. AISI 316L stainless steel tubular frame. 2. Rubber wheels. 3. Rubber belt. 4. Treadmill closing hinge. 5. Closing latch. 6. Belt rollers. 7. Tension adjustment screw. 8. Back feet with suction cups. 9. Support platform. 10. Front handlebar. 11. Production serial number.

5 USER INSTRUCTIONS

- • • The belt is not moved by any mechanical device but by the user providing a down and backward force with their legs. Due to the size of the support platform and the belt, the tread mill can be used for a wide variety of exercises, ranging from simply walking, walking backwards to running.
- • • The ideal water depth when using the tread mill should be between 4 ft (120 cm) to 4.5 ft (140 cm) for a person of average height.
- • • It is recommended that you familiarize yourself with the equipment at the beginning by exercising slowly, and building up to a more strenuous routine once you are comfortable with the equipment.
- • • At all times observe the safety requirements and regulations of the pool that you are using.

6 HANDLING AND STORAGE

- • • When you receive the delivery and you notice that the packaging is damaged, inform the transport carrier immediately.
- • • For further assembly instructions of the tread mill, please view the enclosed dvd.
- • • The *Aqqwalking Tread Mill* can be easily moved, using the front wheels. Just tilt the tread mill back with the wheels facing you using the handrail for leverage.

MAINTENANCE

7 MAINTENANCE

- • • The *Aqqwalking Tread Mill* does not need any maintenance except the occasional check on the security of all bolts and nuts.
- • • If the tread mill is used in salt water or thermal pools, rinse the treadmill thoroughly with fresh water to avoid build up of chemical deposits and residues.

PACKAGE

Make sure that on receipt of the tread mill its packaging is not damaged. If it is, notify the carrier immediately as well as Aqqatix USA. If possible take pictures to show the extent of the damage.



For additional instructions on assembly, please view the dvd.

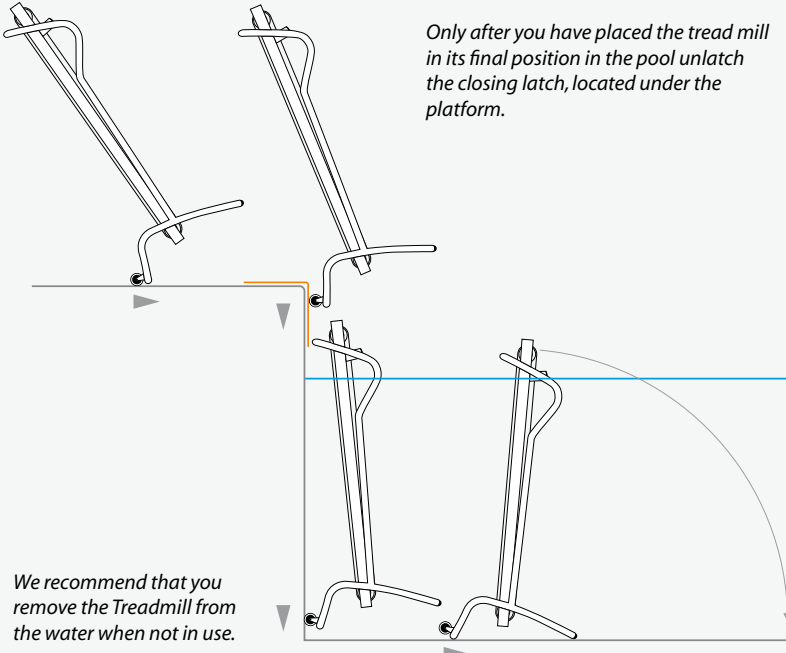


 1000 x 400 x h.750 mm

TIPS FOR LOWERING THE TREADMILL INTO THE POOL

Keep the treadmill closed and wheel it towards the pool edge, where the Board Guard is located, then let the wheels run down the wall of the swimming pool until the treadmill reaches the floor.

Only after you have placed the treadmill in its final position in the pool unlatch the closing latch, located under the platform.



Board Guard
(optional)

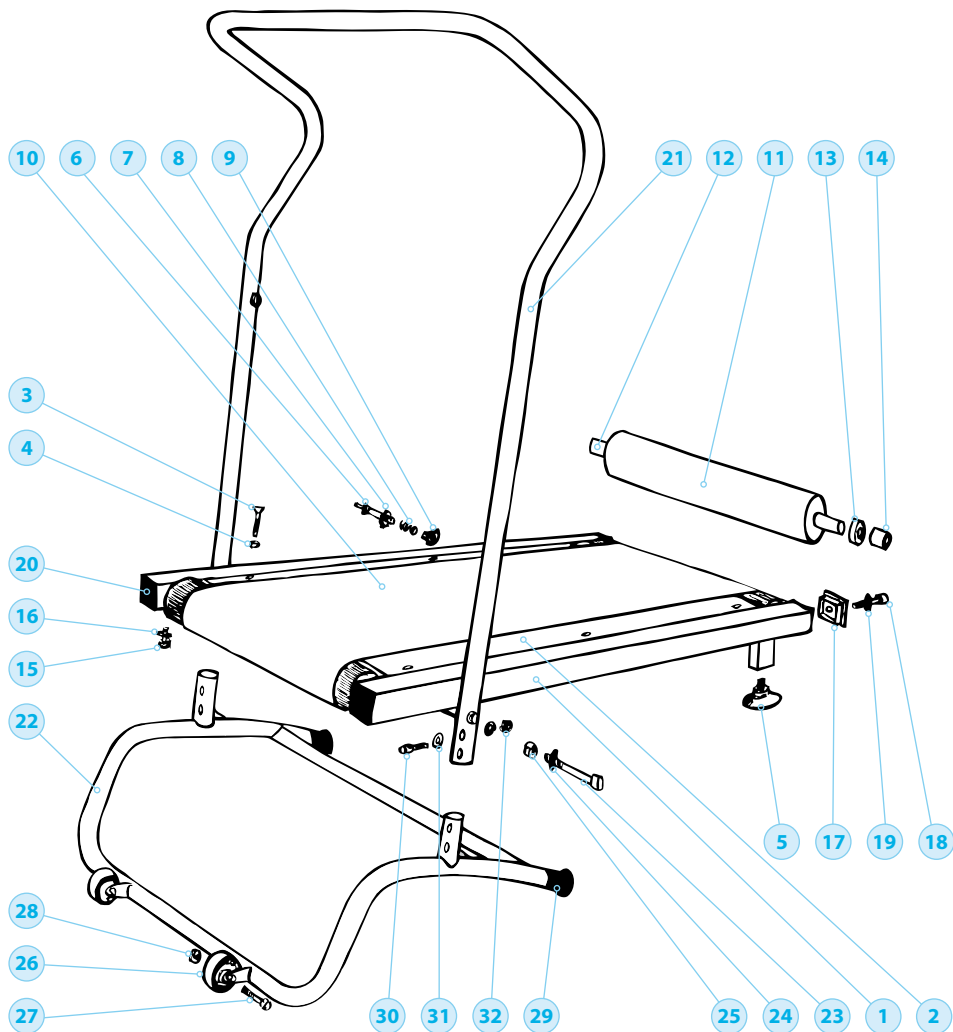
ATTENTION!

Avoid storing the treadmill in close proximity to the swimming pool or in access ways to the swimming pool in order to avoid accidents.

REPLACEMENT PARTS

8 REPLACEMENT PARTS

- • • If you need any replacement parts for the tread mill, please provide part identification no., description and code. The code can be found in the listing below. Send your requests to the address at the bottom of this page and we will ship to you as soon as possible.



LISTING OF REPLACEMENT PARTS

Aqqatix USA advises you against using non original replacement parts which could compromise the equipment's features and performance.

No.	DESCRIPTION	QTY	CODE
1	STAINLESS STEEL SQUARE TUBE FRAME	1	RTMS 001
2	PLASTIC BASE	1	RTMS 002
3	CONIC SCREW M 6x30 mm	6	RGEN 001
4	SELF-LOCK NUT M 6	6	RGEN 002
5	SUCTION CUP Ø 50 mm	2	RGEN 003
6	SAFETY AXLE M10	1	RTMS 003
7	NUT M 10xh5	1	RGEN 004
8	SPRING Ø 12x20 mm	2	RGEN 005
9	KNOB Ø 40x30 mm	1	RGEN 006
10	DOUBLE LAYER BELT	1	RTMS 004
11	PVC FREE ROLLER Ø 80 mm	2	RTMS 005
12	ROLLER AXLE Ø 25x570 mm	2	RTMS 006
13	PLASTIC BEARING	4	RTMS 007
14	ROLLER SPACER Ø 35x29 mm	4	RTMS 008
15	CYLINDRICAL CAP SCREW M 8x30 mm	2	RGEN 007
16	WASHER Ø 8x24 mm	2	RGEN 008
17	STAINLESS STEEL SQUARE CAP	2	RTMS 009
18	CYLINDRICAL CAP SCREW M 8x70 mm	2	RGEN 009
19	WASHER Ø 8x24 mm	2	RGEN 008
20	PLASTIC CAP 50x50 mm	2	RTMS 010
21	STAINLESS STEEL HANDLE BAR	1	RTMS 011
22	STAINLESS STEEL HANDLE BAR BASE	1	RTMS 012
23	HEXAGONAL CAP SCREW M 12x120	2	RTMS 013
24	WASHER Ø 12x24 mm	2	RGEN 010
25	SELF-LOCK NUT M 12	2	RGEN 011
26	RUBBER WHEEL Ø 60x28 mm	2	RGEN 012
27	CYLINDRICAL CAP SCREW M 8x50 mm	2	RGEN 013
28	SELF-LOCK NUT M 8	2	RGEN 014
29	SPHERICAL CAP Ø 30+30x45 mm	2	RTMS 014
30	CYLINDRICAL CAP SCREW M 8x45 mm	4	RGEN 015
31	WASHER Ø 8x16 mm	8	RGEN 016
32	SELF-LOCK NUT M 8	8	RGEN 014

9 TECHNICAL ASSISTANCE

- • • For any technical assistance please contact our customer service:

AQQATIX USA
P.O. Box 816639
Hollywood, FL 33081

Tel: 1-800-330-3228
info@aqquatixusa.com

For additional instructions on maintenance and replacement parts, view the enclosed dvd.



10 WARRANTY

- • • Return the completed warranty card with the equipment description and production serial number within 15 days of purchase of the equipment.
- • • Aqquatix USA warrants that the equipment is free from defects in materials and workmanship under normal use and service for the applicable warranty period. The applicable warranty period is 12 months from the date of purchase, and must be supported by an invoice or other documentation attesting to the equipment purchase date.
- • • Said warranty shall be valid only to the original purchaser of the equipment when the equipment is used in accordance with the supplied instructions.
- • • Under the warranty, Aqquatix USA will at its discretion repair or replace the equipment or defective components.

10.1 TERMS

- • • The warranty will only be honored following the presentation of documentation attesting to the purchase as specified above. The warranty does not apply if:
 - • • **a.** any modification and/or alteration of the equipment has been made to modify the performance or appearance of the equipment;
 - • • **b.** there is any wear and tear to the component parts defined as consumable parts, namely, rubber belt etc.;
 - • • **c.** damage is caused by:
 1. transportation from one location to another;
 2. incorrect use due to failure to comply with the instructions provided,
 3. improper or abnormal use;
 4. acts of nature, fire, accidents or the like;
 5. unsuitable storage locations (e.g. dusty areas such as garages or cellars).

Aqquatix Usa is not responsible for possible indirect damage caused by or connected with the use or the performance of the product

- • • The warranty is the only warranty given by Aquatix USA.
- • • No one is authorized to make any other warranties on Aquatix USA's behalf.
- • • ANY IMPLIED WARRANTIES, INCLUDING MERCHANTABILITY OF FITNESS FOR A PARTICULAR PURPOSE, SHALL NOT EXTEND BEYOND THE APPLICABLE WARRANTY PERIOD SPECIFIED ABOVE. AQUATIX USA'S SOLE LIABILITY WITH RESPECT TO ANY DEFECT, SHALL BE AS SET FORTH IN THIS WARRANTY. IT IS AGREED THAT AQUATIX USA SHALL HAVE NO LIABILITY WHETHER UNDER THIS WARRANTY OR IN CONTRACT, TORT OR NEGLIGENCE OR OTHERWISE FOR CLAIMS FOR SPECIAL, INCIDENTAL OR CONSEQUENTIAL DAMAGES WHICH ARE EXPRESSLY EXCLUDED.
- • • Some states do not allow limitations on how long an implied warranty lasts, or for the exclusion of incidental or consequential damages, so the above may not apply to you.
- • • THE WARRANTY GIVES YOU SPECIFIC LEGAL RIGHTS, AND YOU MAY ALSO HAVE OTHER RIGHTS WHICH VARY FROM STATE TO STATE.

ARTICLE	QTY	AQUACTIVE BIKE	ITEM NUMBER	QTY	AQQWALKING TREAD MILL	ITEM NUMBER	QTY	AQUAFT BIKE	ITEM NUMBER	DOCUMENT No.
		PRODUCTION SERIAL No.								
		PURCHASE DATE								
CUSTOMER DETAILS										
NAME										
ADDRESS										
STATE										
ZIP CODE										
PURCHASED FROM										

WARRANTY CERTIFICATE AQUATIX USA EQUIPMENT

STAMP

DATE

--	--	--	--	--	--	--	--	--	--	--

SIGNATURE

ATTENTION!
To register your warranty return the completed warranty certificate within 15 days of the date of purchase of the equipment.

AQUATIX USA

P.O. Box 816639 ● ● ●
Hollywood, FL 33081

Tel: 1-800-330-3228 ● ● ●
info@aqquatixusa.com

AQUATIX USA

TECHNICAL ASSISTANCE CENTER
P.O. Box 816639
Hollywood, FL 33081